

45/62

WHISPER WALK ROADWAY PLAT NO. I (PART OF A P.U.D.)

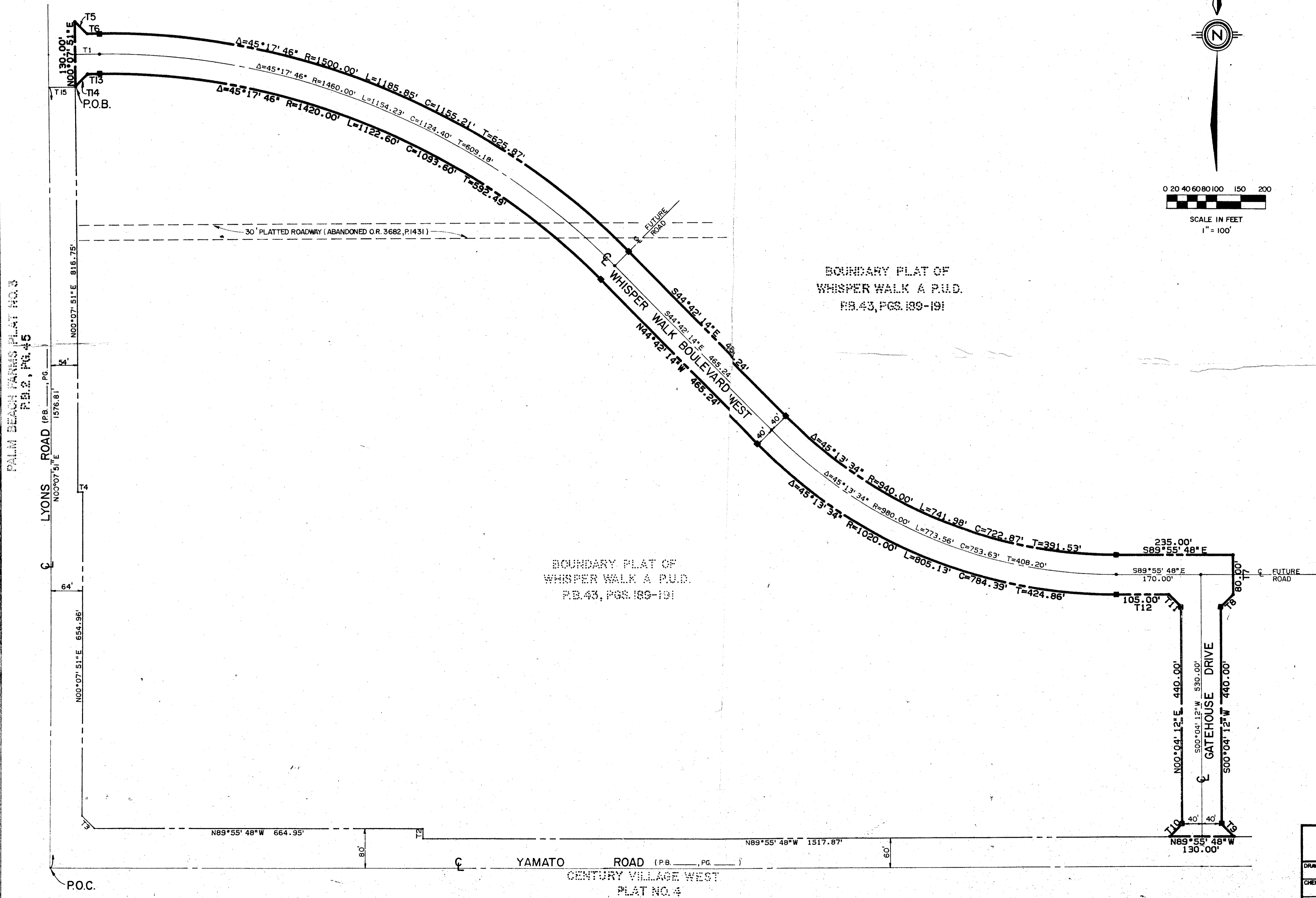
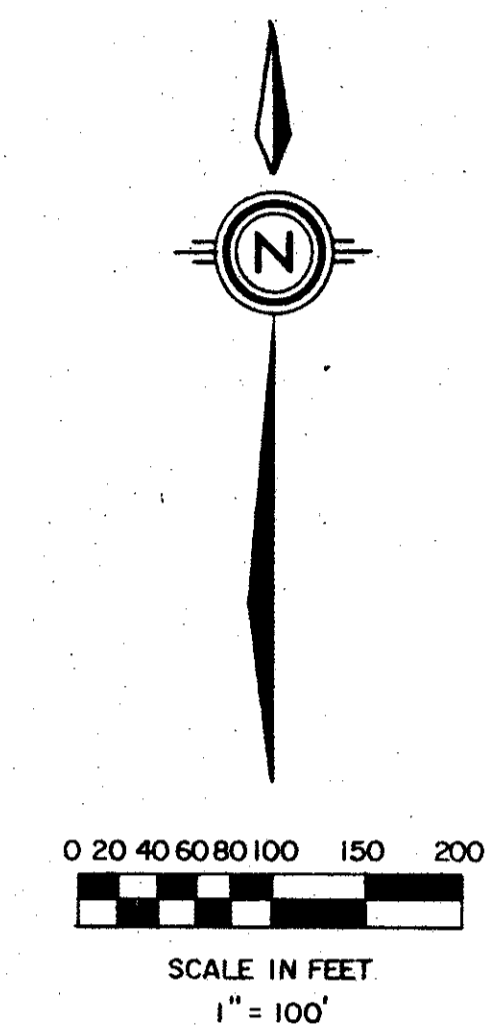
SITUATE IN SECTION 5, TOWNSHIP 47 SOUTH, RANGE 42
EAST, PALM BEACH COUNTY, FLORIDA, BEING A REPLAT
OF A PORTION OF TRACT A OF THE BOUNDARY PLAT OF
WHISPER WALK (P.B. 43, P. 189-191).

JANUARY, 1983

SHEET 3 OF 3

45/
62

STATE OF FLORIDA
COUNTY OF PALM BEACH
THIS PLAT WAS FILED FOR
RECORD AT _____
THIS DAY OF _____
AD. 1982 AND DULY RECORDED
IN PLAT BOOK _____ ON PAGES
AND _____
JOHN B. DUNKLE, CLERK
CIRCUIT COURT
BY: _____ DC.



BOUNDARY PLAT OF
WHISPER WALK A.P.U.D.
P.B. 43, PGS. 189-191

BOUNDARY PLAT OF
WHISPER WALK A.P.U.D.
P.B. 43, PGS. 189-191

NO	BEARING	DISTANCE
T1	S90°00'00"E	49.60
T2	N00°04'12"E	20.00
T3	N44°53'58"W	35.37
T4	N89°52'09"W	10.00
T5	S44°56'05"E	35.40
T6	N90°00'00"E	24.45
T7	S00°04'12"W	80.00
T8	S45°04'12"W	35.36
T9	S44°55'48"E	35.36
T10	N45°04'12"E	35.36
T11	N44°55'48"W	35.36
T12	N89°55'48"W	105.00
T13	N90°00'00"E	24.75
T14	S45°03'55"W	35.31
T15	S89°52'09"E	54.00

4-77-42

45/62

Meridian Surveying and mapping inc. WEST PALM BEACH, FLORIDA

DRAWN	M.E.H.	DATE	JAN., 1982
CHECKED		SCALE	1" = 100'
DRAWING NO.	81-P-051		

**WHISPER WALK ROADWAY
PLAT NO. I (PART OF A P.U.D.)**

PALM BEACH JAMES PLAT NO. 3
P.B. 2, PG. 45

LYONS ROAD (P.B. _____, PG. _____)
N00°07'51"E 1576.81'

LYONS ROAD (P.B. _____, PG. _____)
N00°07'51"E 816.75'

LYONS ROAD (P.B. _____, PG. _____)
N00°07'51"E 654.96'

N89°55'48"W 664.95'

N89°55'48"W 1517.87'

N89°55'48"W 130.00'

YAMATO ROAD (P.B. _____, PG. _____)
CENTURY VILLAGE WEST
PLAT NO. 4
P.B. 39, PGS. 75-80

P.O.C.